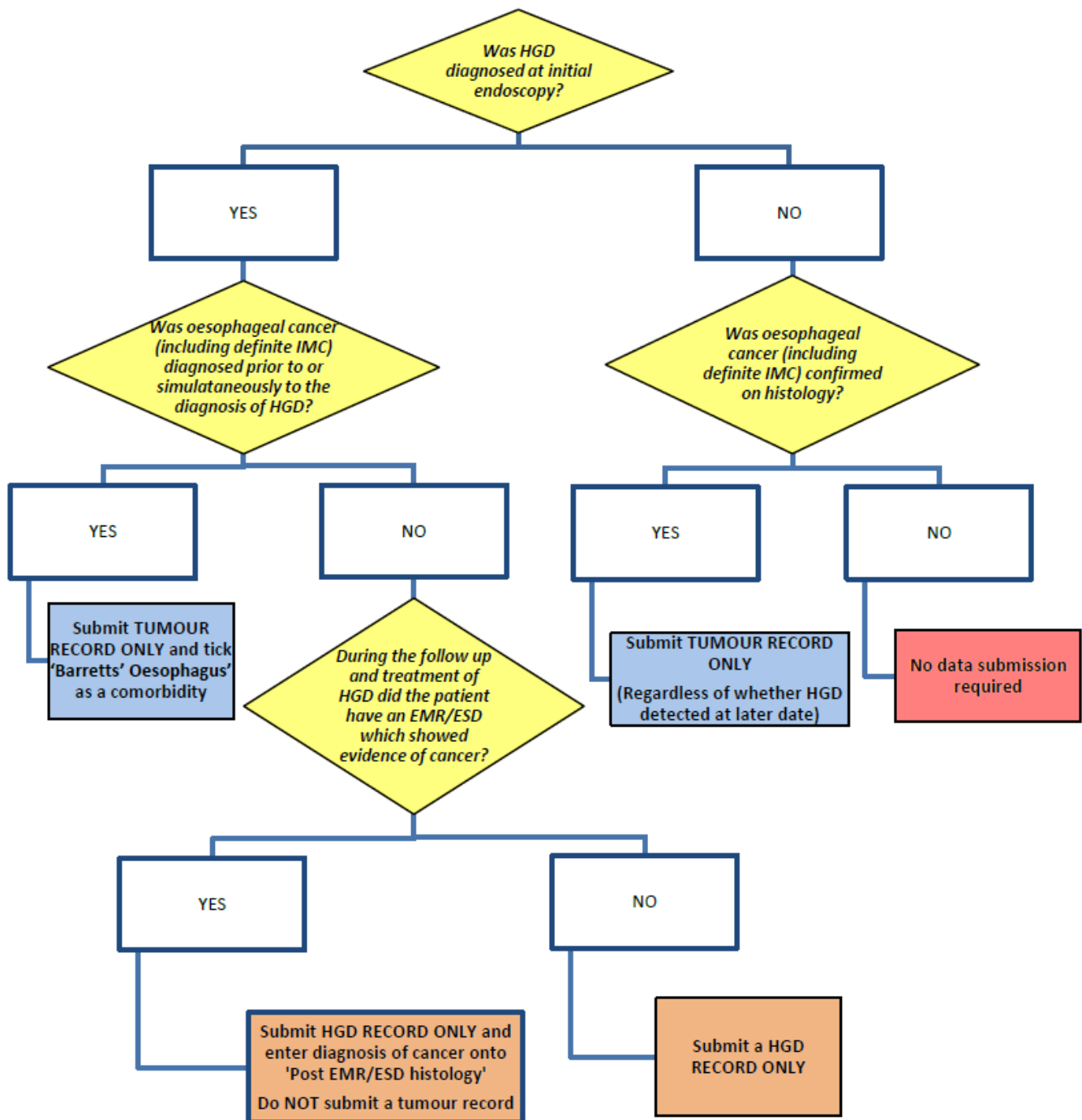


## Guideline for HGD and tumour submissions



HGD – High Grade Dysplasia of the oesophagus

IMC – Intramucosal Cancer

EMR- Endoscopic Mucosal Resection

ESD – Endoscopic submucosal Dissection

Ambiguous cases

- Where a patient has the diagnosis of cancer made on repeat diagnostic endoscopic biopsy, after an initial diagnosis of HGD but prior to any treatment for HGD, then the patient should only have a tumour record submitted.
- Where patients are receiving treatment for HGD and are later found to have cancer, then only a HGD record should be submitted, as we are interested in the progression of the disease.